

Health  
Innovation  
Network

**NHS**  
England

NHS Innovation Accelerator

Health  
Innovation  
Network  
Local change, national impact



**NHS**  
England

# 2025 INTAKE LAUNCH

NHS Innovation Accelerator

Digital Health Rewired

19 March 2025

NEC Birmingham



Dear Fellows, Partners and Friends,

Welcome to the launch of the NHS Innovation Accelerator's (NIA) 2025 cohort and the celebration of a decade of impact. We are delighted to introduce this year's Fellows and mark ten years of supporting innovations that improve patient care and clinical outcomes across the NHS and beyond.

Healthcare faces ongoing challenges, but with them come incredible opportunities. Each Fellow's work is already making a difference - enhancing care, increasing efficiencies, and helping the NHS better meet the needs of patients and healthcare staff. The NIA exists to provide tailored support, expert guidance, and practical insights to help these innovations navigate the system, overcome barriers, and become embedded where they are needed most.

To our new Fellows

Welcome to the community! As you sit here today, take a moment to look around at the network you are now part of. Your journey didn't start here, but with the support, guidance, and collaboration the NIA offers, we hope to help you take it further - building connections, strengthening your leadership, and facing challenges together so your innovation can reach even more patients and staff. We're excited to embark on this journey with you.

To our Partners and Supporters

Thank you for your dedication in making the NIA the success it is today. Your contributions are invaluable in supporting our Fellows and working towards our shared goal of a stronger, more sustainable healthcare system.

We look forward to the year ahead and seeing the progress this cohort will achieve.



**Jack Porter and Mindy Simon**

Co-Directors  
NHS Innovation Accelerator

## Our Support In Numbers



**3,372**

NHS Organisations  
Using NIA Innovations



**£80,879,506**

UK Revenue



**608**

New Contracts



**6,607,773**

Patients Reached



**1,184**

New Roles Created



**240**

Awards Won



**£225,935,808**

Investment Raised



## Nader Alaghband

Ampersand Health

---

[www.ampersandhealth.co.uk](http://www.ampersandhealth.co.uk)



Nader Alaghband / Ampersand Health



[nader@ampersand.health](mailto:nader@ampersand.health)



## Rebecca Allam

PreActiv

---

[www.preactiv.co.uk](http://www.preactiv.co.uk)



Dr Rebecca Allam / PreActiv



@Preactivhealth



[rebecca.allam@preactiv.co.uk](mailto:rebecca.allam@preactiv.co.uk)

Ampersand Health is a behavioural health company focused on immunology and inflammation. The company helps patients with complex long-term conditions navigate the journey from diagnosis to long term remission. The company already works with over 50,000 patients worldwide, as well as healthcare providers and researchers in

the US and the UK; shedding light on the patient journey, enabling more effective monitoring and escalation, and delivering efficiencies and improvements in outcomes through its integrated data platform.

PreActiv optimises patients before surgery using technology to create individualised and adaptive prehabilitation programmes tailored to surgery date. Combining HIIT-style exercise with multimodal support like nutrition and smoking cessation, programmes adapt to patient progress for

maximum effectiveness. By reducing complications and hospital stays, PreActiv offers a scalable, cost-effective solution aligned with NHS perioperative care goals.



## Nicholas Appelbaum

Touchdose

[www.dosium.com](http://www.dosium.com)



Nicholas Appelbaum / Dosium



@nicapples / @dosiumuk



[nicholas@dosium.com](mailto:nicholas@dosium.com)



## Dilshan Arawwawala

ShiftPartner

[www.shiftpartner.com](http://www.shiftpartner.com)



Dilshan Arawwawala / Shift Partner Ltd



@MEHTCCIO



[dilshan@shiftpartner.com](mailto:dilshan@shiftpartner.com)

Dosium are bridging the gap between medical knowledge and practice by embedding the power of the British National Formulary directly into frontline prescribing systems. By automating precise dosage calculations for every patient and condition, they're shifting away from the clutter of alert pop-ups and the need for constant system

configuration, helping prescribers "get it right, first time". By demonstrating an 86% reduction in the odds of prescribing errors occurring, and cutting prescription times by 20%, Touchdose not only enhances safety but also standardises prescribing practices across healthcare settings.

ShiftPartner is tackling the healthcare workforce crisis with a research-driven, data-powered platform designed to empower healthcare organisations to build a flexible, skilled, and engaged workforce. By providing deep insights, behavioural analysis, and a robust intervention framework, ShiftPartner enables organisations to not just understand their workforce, but take

proactive steps to deploy, develop, and retain talent more effectively. With a career management tool "in their pocket," staff gain easy access to opportunities, empowering them to build purposeful, progressive careers in healthcare - fuelling long-term workforce growth, boosting productivity, and enhancing staff retention.



## Greg Burch

### The Digital Health Passport

[www.digitalhealthpassport.co](http://www.digitalhealthpassport.co)



Greg Burch / Digital Health Passport



[greg@tinymedicalapps.com](mailto:greg@tinymedicalapps.com)



## Andrew Davies

### Whitebox HD2 Range

[www.mackwellhealth.com](http://www.mackwellhealth.com)



Andy Davies / Mackwell



[andy.davies@mackwell.com](mailto:andy.davies@mackwell.com)

The Digital Health Passport (DHP) empowers young people and families to take control of asthma and epilepsy with evidence-based health coaching, personalised care planning, and support. Designed to reach those who need it most, particularly low-income families, the DHP engages users through social media,

community initiatives, and NHS partnerships. By improving patient activation and asthma control, the DHP is not only enhancing health outcomes but also reducing NHS costs as it scales nationwide.

The Whitebox HD2 Range is a range of innovative all solid-state UV-C disinfection chambers for semi-critical medical devices based on the latest generation LED technology. The first such devices in the world to conform to the latest BS8628:2022 standard for high-level disinfection performance. Qualified and

evidenced for multiple use-cases that provide automated disinfection, allowing re-use of many medical devices that have previously been single-use.





## Lucy Davies

Prostate Intelligence (Pi™)

[www.lucidamedical.com](http://www.lucidamedical.com)



Lucy Davies / Lucida Medical Ltd



[lucy.davies@lucidamedical.com](mailto:lucy.davies@lucidamedical.com)



## Angie Doshani

JanamApp

[www.janamapp.co.uk](http://www.janamapp.co.uk)



Angie Doshani / Janamapp



[@angiedoshani](https://twitter.com/angiedoshani)



[angiedoshani@gmail.com](mailto:angiedoshani@gmail.com)

Prostate Intelligence™ (Pi™) is an AI and machine learning based software system designed to help radiologists detect and report prostate cancer on MRI scans. Pi™ aim to support the NHS to deliver the prostate cancer pathway faster and accurately, ensuring cancers are not missed on MRI.

JanamApp is a culturally sensitive, linguistically appropriate, evidence-based digital companion for pregnant and postnatal South Asian communities. Available in English and six South Asian languages, it aims to educate, empower, and reduce health inequalities by providing tailored, accessible

information to support informed decision-making and improve maternal health outcomes.





## Alex Fisher

### WID-Easy Test

---

[www.aghealth.co.uk](http://www.aghealth.co.uk)



Alexander Fisher / AGHealth



@AGHealth



[alex.fisher@aghealth.co.uk](mailto:alex.fisher@aghealth.co.uk)



## Richard Howells

### The Tribe Project

---

[www.tribeproject.org](http://www.tribeproject.org)



Richard Howells / The Tribe Project CIC



@Mr\_Howells / @TribeProjectOrg



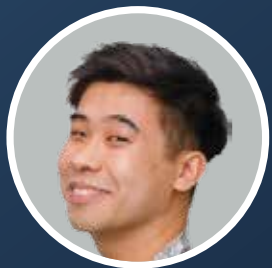
[richard@tribeproject.org](mailto:richard@tribeproject.org)

Each year ~9,000 women across the UK are diagnosed with endometrial cancer but approximately 300,000 women are deemed to be at high risk. More than 90,000 of these women have to undergo painful, often complex and costly unnecessary procedures. The WID-Easy test, is a highly accurate triage test, that has shown to reduce

unnecessary procedures by >90%, whilst not missing any additional cancers.

The mission of The Tribe Project is to close gaps in care provision. The project's work restores choice and control to individuals seeking care whilst offering an economically sustainable model for commissioners and wider health provision in the UK.





## Peter Huang

Healthtech-1

---

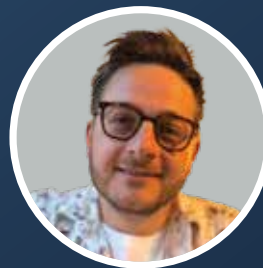
[www.healthtech1.uk](http://www.healthtech1.uk)



Peter Huang / Healthtech 1



[pete@healthtech1.uk](mailto:pete@healthtech1.uk)



## Carmelo Insalaco

Smart Triage

---

[www.rapidhealth.ai/st](http://www.rapidhealth.ai/st)



Carmelo Insalaco / Rapid Health

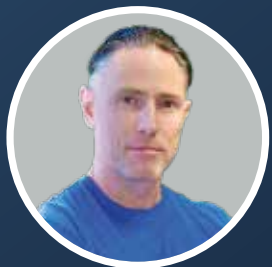


[carmelo@rapidhealth.co.uk](mailto:carmelo@rapidhealth.co.uk)

Healthtech-1 Automated Registrations registers patients on the same day, with all the clinical coding. Admin staff can manage registrations from one place in the Healthtech-1 Hub, and Practice Managers can unlock analytics about their new patients.

Smart Triage is the UK's only fully autonomous AI-powered triage and appointment booking system for GP practices. By seamlessly integrating with EMIS and TPP SystemOne, it removes the need for manual data entry or staff intervention, ensuring patients are triaged and booked into the right care pathway - whether online, by

phone, or in person. With real-time urgency assessment, red-flag detection, and support for planned and preventive care, Smart Triage optimises workflows, enhances patient access, and frees up GP capacity for those who need it most.



## Barri Morgan Jones

Strolll® AR

[www.strolll.co](http://www.strolll.co)



Barri Morgan Jones / Strolll



[barri@strolll.co](mailto:barri@strolll.co)



## Jonathan Knight

Compassly

[www.compassly.com](http://www.compassly.com)



Jonathan Knight / Tefogo



@jnthnknight / @compasslyapp



[jonathan@tefogo.com](mailto:jonathan@tefogo.com)

Strolll® is a pioneering augmented reality (AR) digital therapeutic designed to transform neurological rehabilitation for Parkinson's, stroke, and multiple sclerosis (MS). By integrating cutting-edge AR technology with evidence-based rehabilitation techniques, Strolll enhances mobility, balance, and engagement, making therapy more

effective and accessible. With strong clinical validation, regulatory approvals, and seamless NHS integration, Strolll empowers healthcare providers to deliver data-driven, personalised rehabilitation that improves patient outcomes while offering cost-saving efficiencies to healthcare systems.

strolll

Compassly is an innovative competency passport app that provides complete oversight and management of healthcare professionals' clinical skills. This provides assurance that clinical teams have the right skills to care for patients, while recognising and motivating ongoing professional development. It saves vital clinical time on assessing

clinical skills, and by enabling the transfer of skills across the NHS, it improves the standard of care alongside avoiding re-training.

 Compassly



## Jinghui (Helen) Liang

LabCycle

[www.labcycle.org](http://www.labcycle.org)



Jinghui Liang / LabCycle



@HelenJHLiang / @LabCycleLtd



[helenliang@labcycle.org](mailto:helenliang@labcycle.org)



## Dafydd Loughran

Concentric

[www.concentric.health](http://www.concentric.health)



Dafydd Loughran / Concentric Health



@dafyddloughran



[daf@concentric.health](mailto:daf@concentric.health)

Research and healthcare generate an enormous amount of plastic waste every year, and most of it ends up in landfills or incinerators. LabCycle's innovative decontamination solution transforms used plastics into high-quality materials, which the company uses to make new products for research and healthcare applications.

LabCycle helps research and healthcare institutions reduce waste, lower costs, and meet sustainability goals, without compromising safety or efficiency.



Get rid of paper consent forms. Say hello to Concentric; easy, reassuring, digital consent. Trusted by 35+ NHS Trusts and supporting over a million patients annually, Concentric is the market-leading digital consent application, transforming healthcare's consent and shared decision-making process.





## Caroline McCallum

Verbo®

[www.verboapp.co.uk](http://www.verboapp.co.uk)



Caroline McCallum / Verbo



@AceCommunicate / @verbo\_app



[caroline.mccallum@nhs.net](mailto:caroline.mccallum@nhs.net)



## Valentina Milanova

Daye Diagnostic Tampon

[www.yourdaye.com](http://www.yourdaye.com)



Valentina Milanova / Daye



[valentina@yourdaye.com](mailto:valentina@yourdaye.com)

Approximately 1.9 million children have communication difficulties that impact on life outcomes such as academic attainment, employment prospects and mental health. Timely access to speech and language support is vital to change this trajectory. Trusted by over 1,000 schools and settings around the UK,

Verbo's mission is to empower education staff to enhance the communication skills of all children and young people. Verbo offers screening tools that generate personalised targets, a vast content library with interventions modelled by therapists and robust data reporting to ensure every child can maximise their potential.

Daye's Diagnostic Tampon for HPV screening is an at-home test that integrates cervical cancer screening into a familiar patient routine. This innovative solution increases accessibility to vital health checks, improving early detection rates and reducing the burden on NHS cervical screening services.





**Tom Oakley**

Bleepa®

[www.feedbackmedical.com/bleepa](http://www.feedbackmedical.com/bleepa)



Dr Thomas Oakley / Feedback Medical Ltd



[tom.oakley@fbkmed.com](mailto:tom.oakley@fbkmed.com)



**Thomas Pearson-Jones**

Virtual Nodule Clinic (VNC)

[www.optellum.com](http://www.optellum.com)



Dr Thomas Pearson-Jones / Optellum



[thomas.pearson-jones@optellum.com](mailto:thomas.pearson-jones@optellum.com)

Bleepa®, an easy-to-use clinical collaboration platform, connects care settings with diagnostic and other data to drive better, faster, safer decisions that improve outcomes for patients. It streamlines patient pathways by linking different clinical systems together into a seamless view of the patient.

Optellum's Virtual Nodule Clinic (VNC) is an AI-enabled precision care platform focused on the early diagnosis and treatment optimisation of lung cancer. The solution uses CT images to identify, track and manage incidental pulmonary nodules, and Optellum's unique lung cancer prediction score (LCP-AI) uses computer

vision AI to provide a risk score, supporting clinicians to make optimal management decisions for patients, driving early diagnosis and improved patient outcomes.





## Dominic Pimenta

### TORTUS AI

[www.tortus.ai](http://www.tortus.ai)



Dr Dom Pimenta M.D. / TORTUS

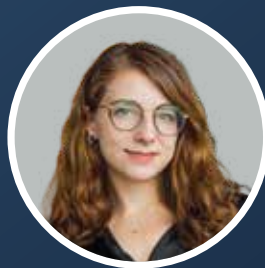


@tortus\_AI



dom@tortus.ai

TORTUS is an AI assistant for clinicians, combining state-of-the-art AI models with a clinical grade safety system. TORTUS listens to consultations, creates automated medical notes, letters and clinical codes, improving productivity, document quality and clinician and patient wellbeing.



## Emilė Radytė

### Nettle™

[www.samphireneuro.com/pages/nettle](http://www.samphireneuro.com/pages/nettle)



Emilė R. / Samphire Neuroscience



em@samphireneuro.com

Nettle is a non-invasive medical grade wearable device that transforms menstrual pain and mood symptom management through advanced neuromodulation technology. Using transcranial direct current stimulation (tDCS), Nettle targets key brain regions involved in pain perception and emotional regulation, providing a safe and effective alternative to

medication. Clinically validated and CE-marked as a Class IIa medical device, Nettle has been shown to deliver significant pain relief and mood improvement, with ongoing trials in endometriosis and PMDD. Designed for at-home use, this rechargeable, app-controlled device offers a simple, user-friendly solution for menstrual health.





## Melinda Rees

Psyomics Platform

[www.psyomics.com](http://www.psyomics.com)



Dr Melinda R. / Psyomics



[melinda.rees@psyomics.com](mailto:melinda.rees@psyomics.com)



## Steve Roest

PocDoc

[www.pocdoc.co](http://www.pocdoc.co)



Steve Roest / PocDoc



[steve@mypocdoc.com](mailto:steve@mypocdoc.com)

Psyomics Platform is a digital mental health tool that sits at the front door of adult secondary care community mental health services, supporting the intake, triage and assessment processes.

PocDoc has developed innovative smartphone-based technology that enables clinical-grade screening at home, at work or in the community for cardio, metabolic and renal diseases. PocDoc's flagship product, the 'Healthy Heart Check' delivers the equivalent of an NHS Health Check in 10 minutes, as opposed to 2 (or more) appointments in primary

care. Patients can be connected in real-time to digital treatment pathways, results are shared back into the record and into the NHS app. The 'Healthy Heart Check' delivers a full cholesterol profile, BMI score, calculates heart age, and provides a ten-year risk assessment for heart attacks or strokes - all in under 10 minutes.



## Sashi Sangala

MyRenalCare

---

[www.myrenalcare.com](http://www.myrenalcare.com)



Sashi Sangala / MyRenalCare



[sashi.sangala@myrenalcare.com](mailto:sashi.sangala@myrenalcare.com)



## Haris Shuaib

Newton's Tree

---

[www.newtonstree.com](http://www.newtonstree.com)



Haris Shuaib / Newton's Tree



[@haris\\_shuaib](https://twitter.com/haris_shuaib)



[haris@newtonstree.com](mailto:haris@newtonstree.com)

MyRenalCare empowers individuals with Chronic Kidney Disease to self-manage their condition from home with remote support from Renal Specialists. This significantly increases capacity, allowing for more patients to be cared for at lower cost.



The NHS faces significant challenges in adopting and scaling AI solutions due to fragmented deployment, regulatory hurdles, and a lack of standardised evaluation and monitoring. Newton's Tree provides a comprehensive AI deployment platform that enables NHS Trusts to seamlessly integrate multiple AI solutions into their clinical workflows,

ensuring regulatory compliance and continuous performance monitoring. By reducing barriers to adoption and making AI more accessible, it helps the NHS harness the full potential of AI technologies to improve patient care and operational efficiency.







## Darren Sloof

AeroTitan & AeroSentinel

[www.airpurityuk.com](http://www.airpurityuk.com)



Darren Sloof / AirPurity UK



[darrensloof@airpurityuk.com](mailto:darrensloof@airpurityuk.com)



## Billy Webber

Boundless

[www.xrtherapeutics.co.uk](http://www.xrtherapeutics.co.uk)



Billy Webber / XR Therapeutics



@BillyWebber1



[billy@xrtherapeutics.co.uk](mailto:billy@xrtherapeutics.co.uk)

AeroSentinel and AeroTitan are pioneering air quality and infection control solutions that help healthcare settings reduce infections, improve patient outcomes, and cut energy costs. AeroSentinel provides real-time data on ventilation, bioaerosol risks, and environmental conditions, while AeroTitan delivers advanced air purification and control all

without disruption to hospital operations. Together, they enable smarter, safer, and more sustainable healthcare environments.



Boundless by XR Therapeutics is an innovative immersive therapy tool that empowers mental health professionals to deliver more effective and efficient treatment. Clinically backed and used in NHS settings, it offers a safe, controlled environment to accelerate recovery. With scalable deployment, Boundless is transforming mental

healthcare, actively meeting individual needs in real-world settings.



# NHS Innovation Accelerator Mentors

**Adam Kirk**

Co-Founder and Director, Mylocalsurgery and Apollo Innovation

**Adrian Downing**

Independent Consultant specialising in Healthcare SMEs

**Professor Lord Ajay Kakkar**

Chairman and Professor of Surgery, King's Health Partners and UCL

**Dr Aman Gupta**

Medical Affairs Manager, Pfizer UK and NHS Anaesthetist, NHS

**Amir Hashmi**

CEO, ZSAH

**Andreas Haimboeck-Tichy**

Managing Director of Healthcare UKI, Accenture

**Professor Lord Ara Darzi**

Co-Director, Institute of Global Health Innovation, and Consultant Surgeon, ICL

**Dr Archana Sharma**

Medical Doctor and Founder, Neem Tree Press

**Bobby Kaura**

Seed investment and International Development, Illumina Accelerator Cambridge

**Dr Calla Ingham Clark**

Medical Director for Clinical Effectiveness, NHS England

**Debbie Wright**

Director, Wright Procurement Ltd

**Ed Jones**

Independent Adviser

**Elisa del Galdo**

Independent Consultant Specialising in Business Development

**Fiona Bride**

Director of Medicines, Value and Access, NHS England

**Gary Gallen**

CEO and Founder, rradar

**Hak Salih**

Global Startup Partner Strategist - APJ and EMEA, Amazon Web Services (AWS)

**Dr Harpreet Sood**

NHS Primary Care Doctor, Non-Executive Director, Health Education England (HEE)

**Hassan Chaudhury**

Global Digital Health Specialist and Commercial Director, Vita Healthcare

**Hina Pandya**

Media Strategist and Journalist

**Ian Thompson**

Independent Digital Health Specialist

**Jack Savers**

Senior Associate - European Patent Attorney | Chartered Patent Attorney, Gill Jennings & Every LLP

**James Norman**

EMEA Health & Life Science Solutions Director, Pure Storage, Inc.

**Jenny Chong**

Non-Executive Director, Medway NHS Foundation Trust

**Jim McDonald**

Senior Programme Manager, Digital Transformation, NHS Midlands and Lancashire Commissioning Support Unit

**Professor Joanne Hackett**

Head of Genomic and Precision Medicine, IQVIA

**Professor Sir John Burn**

Professor of Clinical Genetics and Non-Executive Director, Newcastle University and NHS England and NHS Improvement

**Jon Spiers**

CEO, Royal Free Charity

**Juliet Armstrong**

Independent Transformational Change and Digital Transformation Specialist

**Kay Boycott**

Independent Advisor and Strategy Consultant

**Kelly Lin**

Senior Associate, Consulting & Freelance Consultant, Newmarket Consulting

**Lily Tang**

Freelance Consultant

**Lucie Jaggard**

Group Chief Procurement Officer, Legal and General Ltd

**Manish Miglani**

Investment Director, Nesta

**Marcus Stow**

Director Of Internal Operations, Compliance and Clinical Safety, Proximie

**Dr Mark Jenkins**

Co-Founder, Ovva

**Martin Gossling**

Head of Innovation, University Hospital Southampton NHS Foundation Trust

**Dr Mayur Vibhuti**

GP and Clinical Entrepreneur Fellow, NHS England | NHS Kent & Medway ICB

**Dr Nicholas Ibery**

Associate Partner and Medical Doctor and Lawyer, Pangea Investors

**Paul Benton**

Managing Director, Association of British HealthTech Industries (ABHI)

**Paul Carder**

Head of Research, NHS West Yorkshire Integrated Care Board

**Professor Peter Brindle**

General Practitioner, Consultant, Advisor

**Pollyanna Jones**

Partner, Health and Life Sciences, Monstarlab

**Dr Rajeev Shah**

Clinical Director, East London Foundation Trust

**Rakesh Uppal**

Director of Life Sciences, Barts Health NHS Trust

**Robert (Bob) Mollen**

US-Qualified Corporate Lawyer, Fried Frank

**Ross O'Brien**

Co-Founder, UK XR Health Alliance

**Sam Shah**

Chief Medical Strategy Officer, Numan

**Dr Sam Barrell**

CEO, LifeARc

**Professor Sudhesh Kumar**

Dean of Warwick Medical School and Director of the Institute of Digital Healthcare

**Professor Tony Young**

National Clinical Director for Innovation, NHS England

**Tristi Tanaka**

Head of the CMO Portfolio, Black Country Healthcare NHS Foundation Trust

**Vincent Sai**

Group Chief Executive, Modality Partnership

**Will Smart**

Director, CareTech Partners

# NHS Innovation Accelerator Fellows

## 2023 Fellows

**Adrian Brown**  
Ascelus

**Chen Mao Davies**  
Anya

**Laura Earnshaw**  
myHappyMind

**Grace Gimson**  
Holly Health

**Rachael Grimaldi**  
CardMedic

**Piyush Mahapatra**  
PathPoint eDerma

**Mark Russell Smith**  
Procomp

**Giles Tully**  
The PinPoint Test

**Michael Watts**  
Emergency Role Allocation System

## 2024 Fellows

**Taz Aldawoud**  
Doc Abode

**Steve Barnett**  
C2-Ai

**Matthew Beatty**  
Surgery Hero

**Benyamin Deldar**  
Deep Medical

**Jack Francis**  
Tailored Talks

**Sharlene Greenwood**  
Kidney Beam

**Peter Hansell**  
ISLA

**Samantha Jackman**  
Boost

**John James**  
The Sickle Cell Society

**Sandeep Konduru**  
Remcare

**Julian Nesbitt**  
Dr Julian

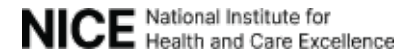
**Tim Ringrose**  
Healthinote

# NHS Innovation Accelerator Partners

## Driving Innovation Across the NHS

Collaboration is at the heart of the NHS Innovation Accelerator (NIA).

We work closely with key partners across the health and care system to support the spread and adoption of proven innovations, helping to improve patient outcomes and support NHS staff.





**Scan the QR code to  
read more about our Fellows**



**NIA@uclpartners.com**



**www.nhsaccelerator.com**



**NHS Innovation Accelerator**



**@NHSAccelerator**

Sign up for our monthly 'Insights' newsletter, via our website  
[www.nhsaccelerator.com](http://www.nhsaccelerator.com)