



Yorkshire
& Humber
AHSN

NHS CONFEDERATION



Yorkshire
Universities

YHealth for Growth: One Year On

Welcome!

- See the 'Handouts' area of the control panel for a guide to using Go To Webinar if you need any technical assistance
- The webinar will start at 12:30 and last for 2 hours
- Your microphone has been set to mute
- Please ask your questions using the 'Questions' panel
- If you need to dial into the webinar to hear the audio, please call 020 3713 5022 – access pin 74282

YHealth for Growth: One Year On

The role of health in driving economic renewal and social inclusion

#YHealth4Growth



Yorkshire
& Humber
AHSN



Yorkshire
Universities

NHS CONFEDERATION





**Yorkshire
& Humber
AHSN**

NHS CONFEDERATION



**Yorkshire
Universities**

Welcome and Introduction

Richard Stubbs
Chief Executive Officer
Yorkshire & Humber AHSN
@richarddstubbs | #YHealth4Growth





Yorkshire
& Humber
AHSN

NHS CONFEDERATION



Yorkshire
Universities

Time	Agenda Item
12:30	Welcome and Introduction Richard Stubbs, CEO, Yorkshire & Humber AHSN
12:50	The role of health in driving economic renewal and inclusive growth Lord Victor Adebawale CBE, Chair, NHS Confederation
13:10	The role of local government/mayoral combined authorities in tackling inequalities, population health and driving economic growth Dan Jarvis MBE, Mayor, Sheffield City Region and Rob Parsons, Political Editor, The Yorkshire Post
13:30	The role of academia, research and development and Yorkshire and Humber assets in driving economic renewal and inclusive growth - Professor Shirley Congdon, Chair, Yorkshire Universities
13:50	Panel Discussion: 'Health as the new wealth' and its role in driving economic renewal and inclusive growth Chaired by Rob Parsons, Political Editor, The Yorkshire Post
14:20	Summary, final remarks and close Richard Stubbs, CEO, Yorkshire & Humber AHSN

Looking back

Where we were this time last year

- Exploring the intrinsic link between health and wealth
- Outlining the health inequalities in our region
- Discussing the impact of these on our economic prosperity
- Highlighting our assets and opportunities

YHealth for Growth Conference

Exploring the role of health in economic and inclusive growth

9 December 2019
Cloth Hall Court
Leeds



Yorkshire
& Humber
AHSN



Stubborn inequalities

1Y 10M



Life expectancy in Yorkshire and the Humber is 1 year 10 months lower than the England average

£6,129



The region's GVA per head lags behind UK average by £6,129

10%



Reducing number of working aged people with long-term health conditions by 10% would decrease rates of economic inactivity by 30%

How can health drive inclusive economic growth?

Spotlight on health inequalities

Pandemic report reveals massive hit to the North of England's health and economy

Will COVID-19 be a watershed moment for health inequalities?

Why we need a cross-government strategy to end inequalities in

h€ Covid-19: Tackling health inequalities is more urgent than ever

Action required to tackle health inequalities in latest phase of COVID-19 response and recovery

Community health initiatives across Yorkshire speak out about the challenges of coping with demand due to the coronavirus outbreak

COVID-19 and health inequalities: Levelling-up in our post-pandemic future

WIDENING HEALTH INEQUALITIES

19 - our greatest

Emerging evidence on health inequalities a

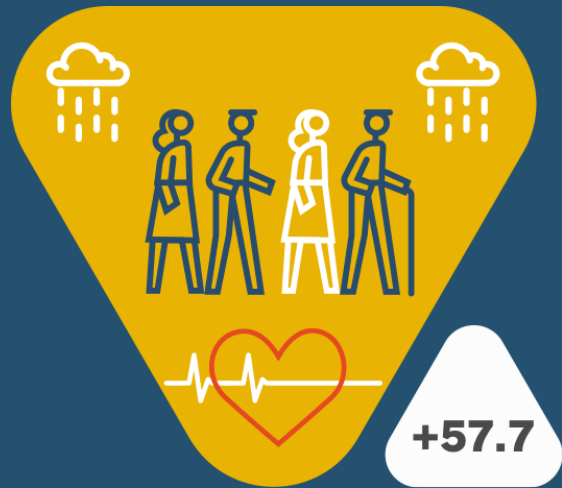
An Olympic effort is needed to improve Yorkshire's health – Richard Stubbs

COVID-19 report reveals massive hit to the North's health and economy

and Health Inequalities COVID-19 work outside V&H

Coronavirus: Northern England 'worst hit' by pandemic

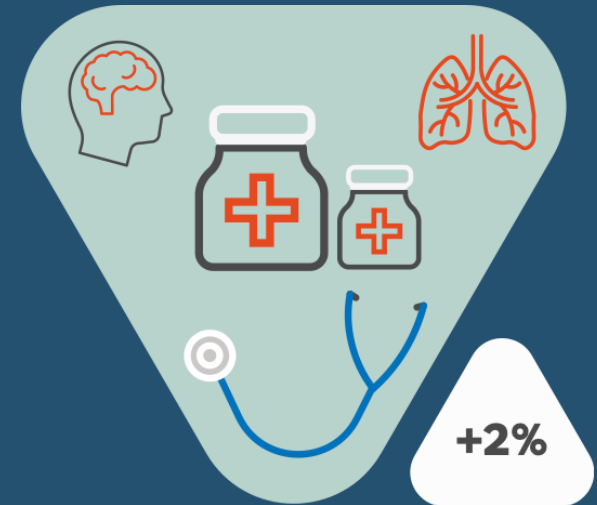
Impact of COVID-19 on the North



An extra 57.7 people per 100,000 died in the North than the rest of England between March and July this year



The economic cost of the increased mortality in the North during the pandemic is estimated to be around £6.86bn



A 1% fall in employment has the potential to increase the prevalence of chronic illness by 2%

Levelling Up Yorkshire and Humber: health as the new wealth post-COVID

www.yhealth4growth.info



Yorkshire
& Humber
AHSN



Yorkshire
Universities

National recommendations

1

Increase health research and development spending in Yorkshire and the Humber

2

Empower local leaders with the tools to improve health outcomes and deliver inclusive growth and wider prosperity

3

Give greater priority to wellbeing in investment decisions

4

Ensure health is included as an outcome in all economic development policies

5

Ensure health as a priority for all departments

Local recommendations

6

Development bodies and anchor institutions should align strategies to deliver inclusive growth

7

Partners should seek to understand, diversify and strengthen local supply chains

8

Partners should commit to supporting jointly-funded posts, secondments or exchanges between sectors

9

Partners should look to strengthen joint analysis and foresight through the establishment of observatories

10

Anchor institutions should collaborate on transformative change, in areas not within their core domain

Why is this work important now?



Building back better



Increasing policy focus in the health system, greater focus on population health and increased appetite for transformation



Increasing focus on tackling inequalities within HM Treasury is driving improvements in the Green Book



Our region boasts in excess of 650 life sciences companies – more than Oxford and Cambridge combined



Yorkshire
& Humber
AHSN

NHS CONFEDERATION



Yorkshire
Universities

The role of health in driving economic renewal and inclusive growth

Lord Victor Adebowale CBE
Chair

NHS Confederation

@Voa1234 | #YHealth4Growth





**Yorkshire
& Humber
AHSN**

NHS CONFEDERATION



**Yorkshire
Universities**

The role of local government in tackling inequalities, population health and driving economic growth



Dan Jarvis MBE
Mayor
Sheffield City Region
@SCRMayor

Rob Parsons
Political Editor
The Yorkshire Post
@RobParsonsYP



Yorkshire
& Humber
AHSN

NHS CONFEDERATION



Yorkshire
Universities

The role of academia, research and development and Yorkshire & Humber assets in driving economic renewal and inclusive growth

Professor Shirley Congdon

Chair

Yorkshire Universities

@ShirleyCongdon | #YHealth4Growth



*Shirley Congdon
Vice-Chancellor University of Bradford
Chair of Yorkshire Universities*

**The role of
academia, research
& development, Y&H
assets in driving
economic renewal
and inclusive growth.**





5.4 million
residents

How can they be best served to prosper ?



Mission

- Yorkshire Universities works to maximise the contribution of higher education to the region, and beyond, through **collaboration**, where this generates **greater impact and public benefit**, and aspiration and opportunity are supported.

Leeds

Leeds Arts University
Leeds Beckett University
Leeds Conservatoire
Leeds Trinity University
University of Leeds

York

University of York
York St John University

Hull

University of Hull

Bradford

University of Bradford

Sheffield

Sheffield Hallam University
The University of Sheffield

Huddersfield

University of Huddersfield

Yorkshire



LEEDS
BECKETT
UNIVERSITY



Leeds Trinity
University

Sheffield
Hallam
University



UNIVERSITY of
BRADFORD

University of
HUDDERSFIELD
Inspiring global professionals



**UNIVERSITY
OF HULL**



UNIVERSITY OF LEEDS



The University
Of
Sheffield.



UNIVERSITY
of York

Est.
1841

**YORK
ST JOHN
UNIVERSITY**



56,000 (FTE) jobs

Support 56,000 full time equivalent (FTE) jobs: 30,000 of which are professional and managerial staff inside the HE sector and a further 26,000 FTEs jobs are based in the wider supply chain, underpinned by the spending of staff and students.

£2.9bn

Contribute £2.9bn each year to the region's economy and play a critical role in generating jobs, creating innovation, talent, and enterprise and driving productivity.

196,000+ Students

Annually have over 196,000 students studying in Yorkshire, a third of whom are originally from the region



120+ countries

Attract a large and diverse student population from more than 120 countries.



A spend of:
£250m
in the local supply chain



...and a further
£340m
in the rest of the UK.



Invest £324 million in capital assets annually, helping to support local regeneration and capacity building in our region.

68,500

Develop highly-skilled people by producing over 68,500 graduates each year and creating opportunities for the region's workforce.



Generate over £32 million in research consultancy contracts. Obtain over £150 million in collaborative research.



Play a vital role in the region's civic, social and cultural life through community outreach and volunteering, creating accessible and vibrant public places through libraries, arts and sporting facilities.

Yorkshire Universities

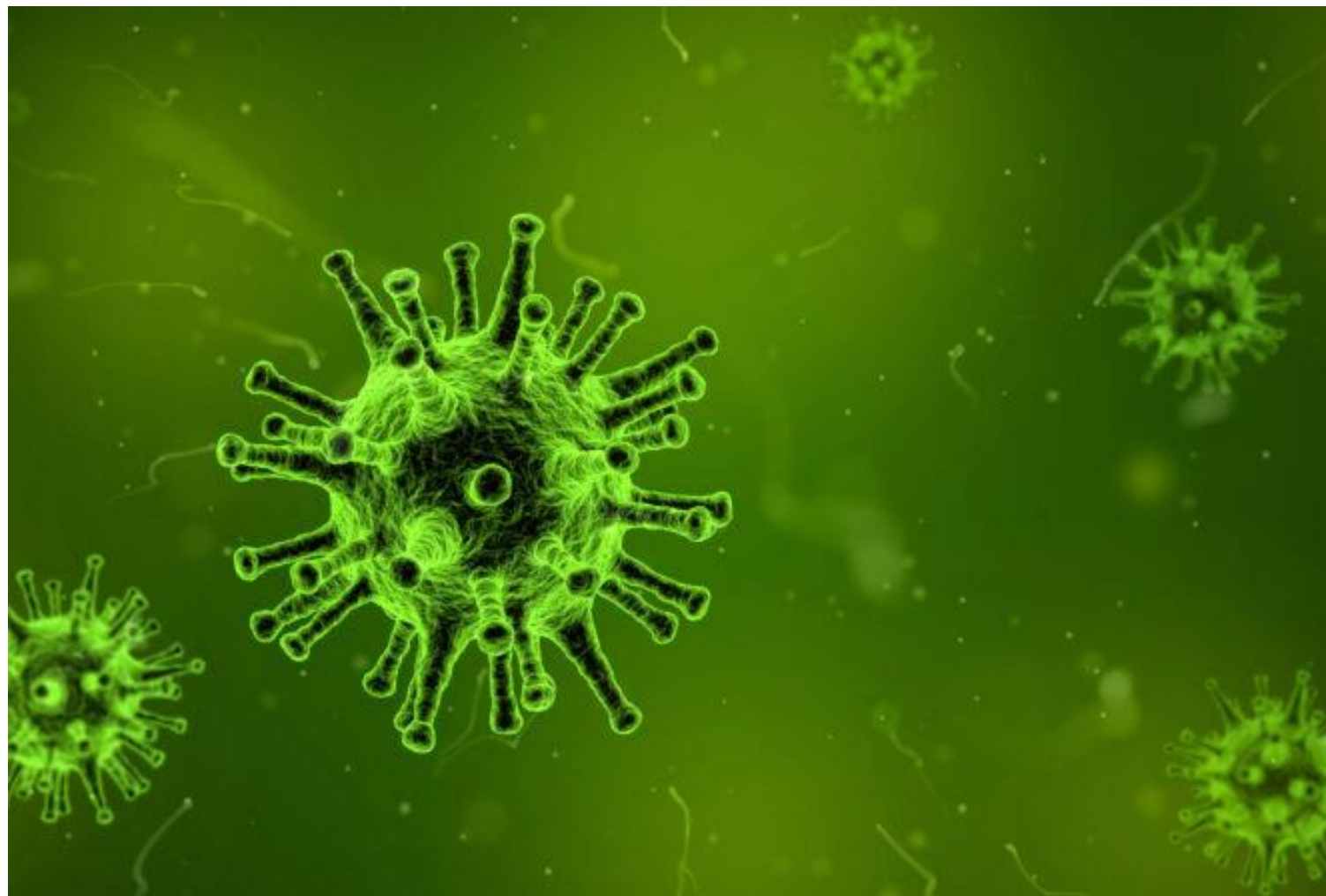


Collaboration and Covid-19

- Many examples of impact at pace
- Workforce
- Well-being
- Equipment
- Logistics
- Education and Training
- Testing



Satoshi Kambayashi



Covid-19
Scientific
Advisory
Group (C-SA
G)

Leeds Institute for Data Analytics: Covid 19 alliance with IBM, Google Cloud.



University of Hull


Covid-19 Resurgence Simulator

A COVID-19 simulator for an urban environment



Advanced Wellbeing Research Centre : Research and Development into physical activity



The background features a large, solid blue shape on the left side, which has a rough, torn edge. To the right of this blue shape is a grey, splattered or ink-blot-like texture that extends towards the center. The rest of the background is a plain, light grey color.

Collaboration
is not just for
crisis situations

Levelling Up Yorkshire and Humber: health as the new wealth post-COVID



Yorkshire
& Humber
AHSN

NHS CONFEDERATION



Yorkshire
Universities

Recommendations

- Development bodies and large regional ‘anchor’ institutions should work together and align strategies to deliver **inclusive growth (6)**
- Strengthen local supply chains for key health and public services(7)
- Support jointly-funded posts, secondments or exchanges between sectors (8)
- Establish **observatories** capable of sharing local data and cross-sector evidence to better inform public policy and interventions (9)
- Anchor institutions should collaborate to coordinate and align their roles in **transformative place-wide change (10)**

Recommendations

- Increase **health research and development** spending in Yorkshire and the Humber
- Empower local leaders with the tools to improve health outcomes and deliver inclusive growth and wider prosperity
- Give greater priority to wellbeing in investment decisions.
- Ensure health is included as an outcome in all **economic development policies**.
- Embed health as a priority for all government departments.

Leeds

Leeds Arts University
Leeds Beckett University
Leeds Conservatoire
Leeds Trinity University
University of Leeds

York

University of York
York St John University

Hull

University of Hull

Bradford

University of Bradford

Sheffield

Sheffield Hallam University
The University of Sheffield

Huddersfield

University of Huddersfield

Yorkshire



LEEDS
BECKETT
UNIVERSITY



Leeds Trinity
University

Sheffield
Hallam
University



UNIVERSITY of
BRADFORD

University of
HUDDERSFIELD
Inspiring global professionals



**UNIVERSITY
OF HULL**



UNIVERSITY OF LEEDS



The University
Of
Sheffield.



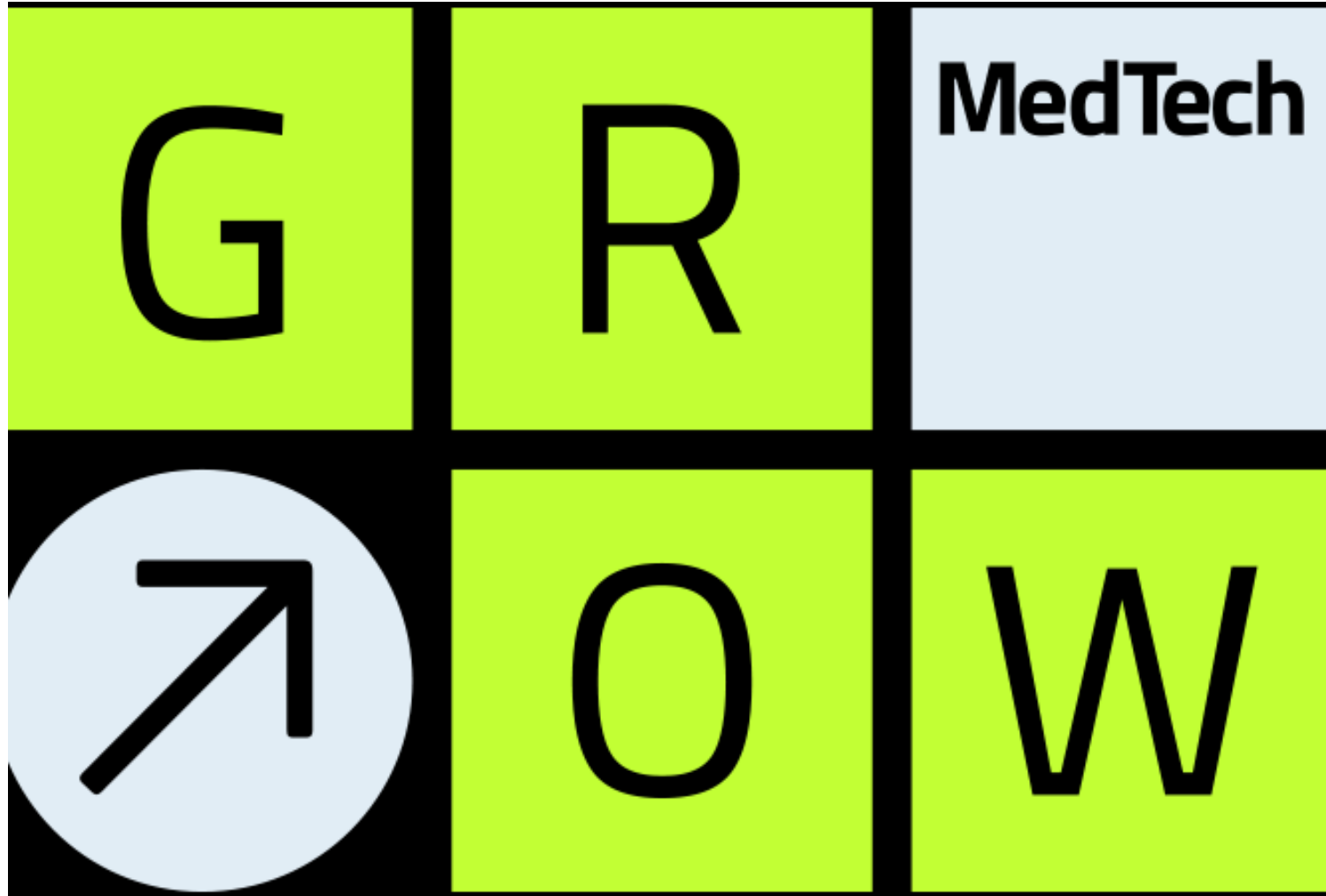
UNIVERSITY
of York

Est.
1841

**YORK
ST JOHN
UNIVERSITY**

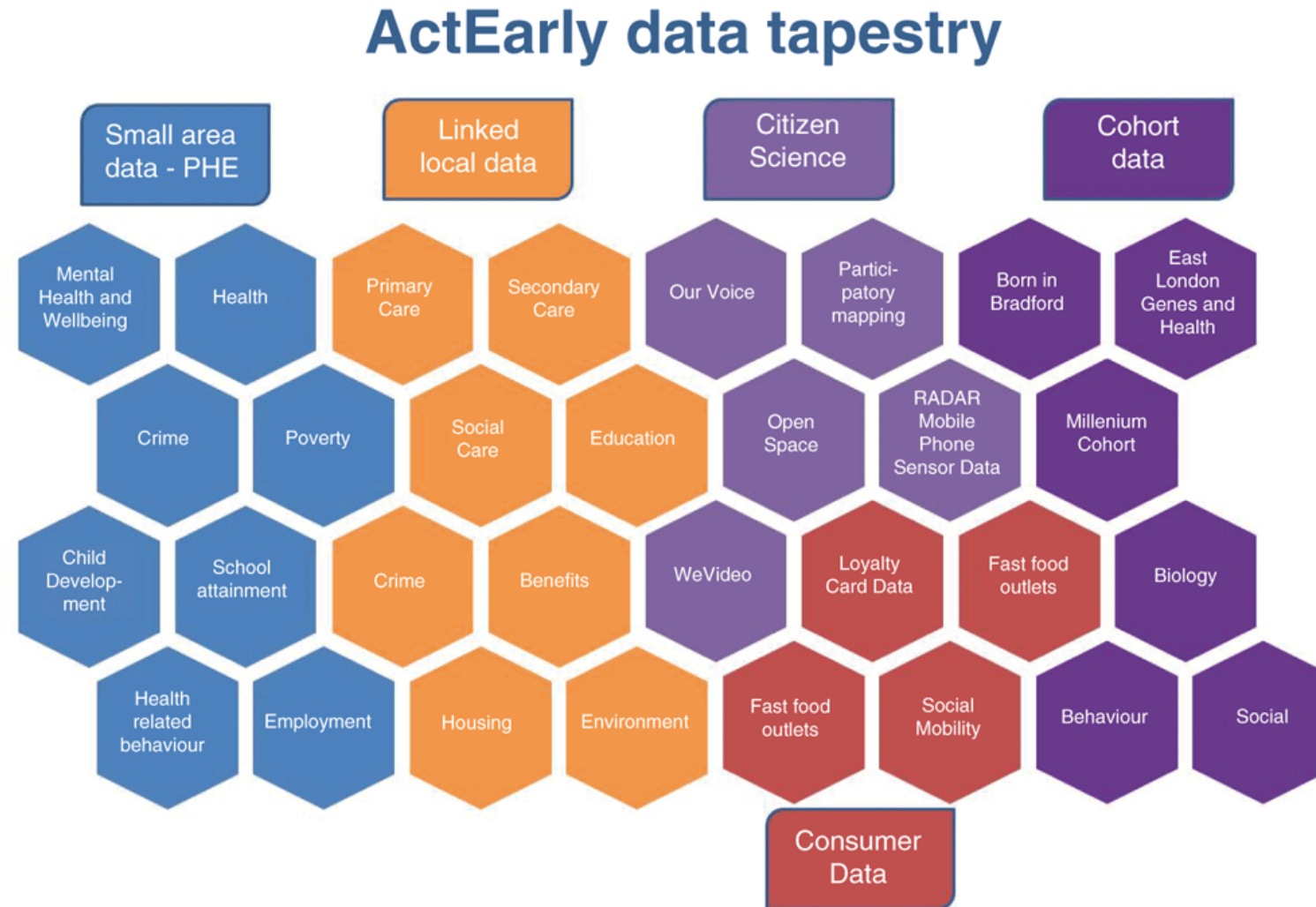
The Key Elements of Systems Leadership





Grow MedTech is a major UK programme providing specialist support for innovation in medical technologies, involving a consortium of six universities across the Leeds and Sheffield City Regions.

Figure 3. ActEarly data tapestry.



Wright J, Hayward A, West J et al. ActEarly: a City Collaboratory approach to early promotion of good health and wellbeing [version 1]. Wellcome Open Res 2019, 4:156 (doi: 10.12688/wellcomeopenres.15443.1)

Wellcome Open Research

Covid-19, racism and the roots of health inequality





Yorkshire
& Humber
AHSN

NHS CONFEDERATION



Yorkshire
Universities

Panel Discussion: 'Health as the new wealth' and its role in driving economic renewal and inclusive growth





Yorkshire
& Humber
AHSN

NHS CONFEDERATION



Yorkshire
Universities

Summary and final remarks

Richard Stubbs

Chief Executive Officer

Yorkshire & Humber AHSN

@richarddstubbs | #YHealth4Growth





Transforming Lives Through Innovation

Photography: Welcome to Yorkshire | <https://www.yorkshire.com/>



*Yorkshire
& Humber*
AHSN

**Richard Stubbs, Chief Executive,
Yorkshire & Humber AHSN**

@Richarddstubbs

Richard.stubbs@yhahsn.com